



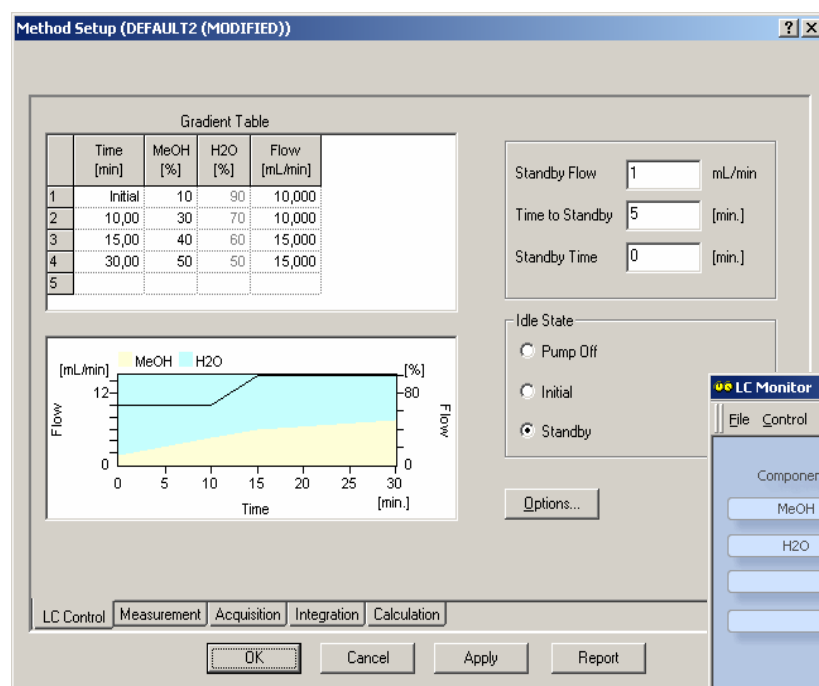
Clarity Control - LC UNI profile for LabAlliance Pumps Series I, II, III and Pumps 1500, 150

The Clarity Chromatography Station allows for direct control of the LabAlliance Pumps Series I, II, III and Pumps 1500, 150, Q-Grad. The Clarity Chromatography Station is designed to acquire and evaluate data from up to four chromatographs at a time (multi detectors measurement supported). The HPLC pump control module is an optional add-on software for the Clarity Chromatography Station.

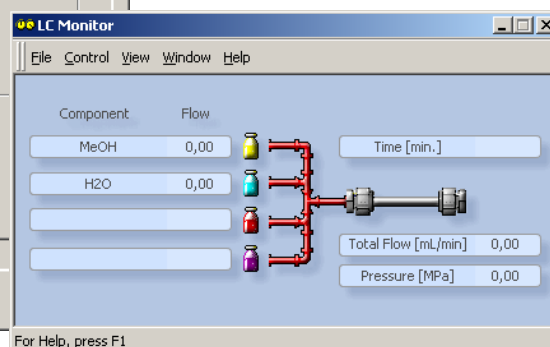
Clarity enables the direct gradient control. The high-pressure gradient is created from up to four individual gradient components where each component is delivered by an individual pump.



Detailed description can be found at: <http://www.dataapex.com/products/controls-lc-uni.php>



The user can easily create a gradient method from the LC control window and set up a percentage of each gradient component including an overall flow rate in the gradient table. All parameters including parameters controlling pump behavior in the Idle state are a part of the method. Therefore it is possible to create various gradient profiles and choose - only by loading - the corresponding method.



Actual flow rates of each gradient component, their overall sum and pressure can be monitored in the independent LC Monitor. The control is realized via a standard RS232 serial port (one per each pump, Q-Grad requires 4 com ports) using a serial DB9F-RJ11 cable to be ordered with the Clarity Chromatography Station.

For more information contact sales@dataapex.com

Requirements:

- **Clarity software** (p/n: C50)
additional information is available at: www.dataapex.com/products/clarity-std.php
- **LC control module** (p/n: A24)
Additional information is available at: www.dataapex.com/products/controls-lc.php
- **Serial DB9F-RJ11 cable** (p/n: SK05). For the Q-Grad pump, 4 of these cables are necessary.

Related products:

- **MultiCOM adapter** (p/n: MC01)