



Clarity Control - HT300A liquid GC autosampler

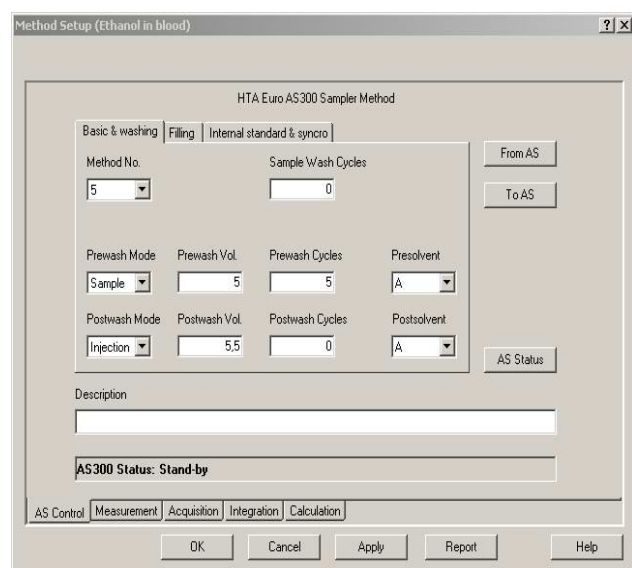
Clarity Chromatography station allows for direct control of the HT300A liquid GC autosampler (HTA Italy). Control of autosamplers enables Clarity to ensure complete automation services for laboratories. The autosampler control module is optional add-on software for Clarity Chromatography Station.

Clarity Chromatography Station is designed to acquire and evaluate data from up to four chromatographs at a time (multi detectors measurement supported).

The chromatography station with the AS control module provides the user with access to all parameters of an injection directly from a computer and allows the user to determine the order of individual vials within sequences. Specific method can be selected for each sample in a given sequence. The method includes AS control parameters, parameters of data acquisition, integration and calculation. Straight from the software you can plan and edit the sequence table.



Detailed description can be found at: www.dataapex.com/products/controls-as-hta-300.php



Sampling parameters are controlled directly from Clarity software: syringe washes with sample or with solvent, pull up strokes for bubble elimination, controlled filling and injection speeds, internal standard techniques.

AS control parameters are accessible from the Method set up window. The user set up all AS parameters in 3 sections – Basic & Washing, Filling, and Internal Standard & Syncro.

Control is realized via a standard serial port of the computer (COM1 - COM4), standard RC 232 RS232-compliant 9F-9M cable.

For more information contact sales@dataapex.com

The setting of the instrument method is seamlessly integrated in Clarity.

Requirements:

- **Clarity software** (p/n: C50)
Additional Information is available at: www.dataapex.com/products/clarity-std.php
- **AS control module** (p/n: A26)
Additional information is available at: www.dataapex.com/products/controls-as.php
- **Straight serial DB9F-DB9M cable** (p/n: SK02)

Related products:

- **MultiCOM adapter** (p/n: MC01)