



## IGLN1 – Converter RS232/GSIOC for GILSON

For controlling Gilson pumps and other devices, a special adaptor from the standard RS232 COM port to the Gilson GSIOC communication protocol is necessary. If the original interface is not available, DataApex supplies the GSIOC Converter to enable communication between the Clarity software and the Gilson model 30X pumps. The converter is directly powered from the COM port on the PC and therefore no external power supply is necessary.

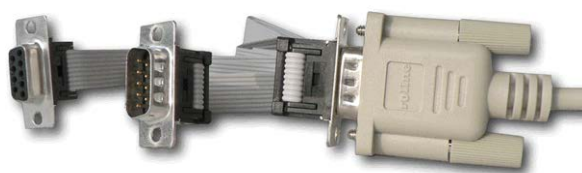
The IGLN1 kit contains all the parts needed to control the binary gradient:

- The converter with three connectors: A **SUB-D 25 pin** (CANNON) receptacle (female) connector (RS232 side) and two **SUB-D 9 pin** receptacle connectors (for connecting two pumps or other GSIOC devices).
- 1x Modemcable straight DB9F-DB25M (SK12), 3m length.
- 2x Standard straight DB9F-DB9M (SK16) serial cable, 1.8 m length.



*IGLN1 Converter RS232/GSIOC for Gilson*

Additional pumps or other devices can be connected to the converter by using the IGLN2 adaptor cable (each additional device might require an additional adaptor cable, depending on the distance between particular pumps. No additional cables are usually necessary). Please note: The GSIOC driver must be installed properly on your PC. The installation program is on the Clarity installation CD.



*IGLN2 Adaptor GSIOC for GILSON*